

Primljen / Received on: 13.09.2021.  
Revidiran / Revised on: 26.09.2021.  
Prihvaćen / Accepted on: 15.01.2022.

PRIKAZ SLUČAJA I  
PREGLED LITERATURE  
CASE REPORT AND  
REVIEW OF LITERATURE  
doi: 10.5937/asn2285381A

# ORALNI PIOGENI GRANULOM: PRIKAZ SLUČAJA I PREGLED LITERATURE

## ORAL PYOGENIC GRANULOMA: A CASE REPORT AND REVIEW OF LITERATURE

*Sonika Achalli<sup>1</sup>, Murali Patia<sup>2</sup>*

<sup>1</sup>NITTE (SMATRA SE UNIVERZITETOM), MEMORIJALNI INSTITUT ZA STOMATOLOŠKE NAUKE AB SHETTI, DEPARTMAN ZA ORALNU MEDICINU I RADIOLOGIJU, MANGALORE, INDIJA

<sup>2</sup>NITTE (SMATRA SE UNIVERZITETOM), MEMORIJALNI INSTITUT ZA STOMATOLOŠKE NAUKE AB SHETTI, DEPARTMAN ZA ORTODONCIJU I DENTOFACIJALNU ORTOPEDIJU, MANGALORE, INDIJA

<sup>1</sup>NITTE (DEEMED TO BE UNIVERSITY), AB SHETTY MEMORIAL INSTITUTE OF DENTAL SCIENCES, DEPARTMENT OF ORAL MEDICINE AND RADIOLOGY, MANGALORE, INDIA

<sup>2</sup>NITTE (DEEMED TO BE UNIVERSITY), AB SHETTY MEMORIAL INSTITUTE OF DENTAL SCIENCES, DEPARTMENT OF ORTHODONTICS AND DENTOFACIAL ORTHOPAEDICS, MANGALORE, INDIA

### *Sažetak*

**Uvod:** Piogeni granulom je uobičajena neoplastična izraslina u usnoj duplji, koja je po prirodi hiperplastična. Predložene su različite teorije etiopatogeneze za piogeni granulom. Obično se smatra da nastaje kao odgovor na različite lokalne iritanse, kao što su kamenac, materijal stranog tela itd. Hemoragičan je i često krvavi na dodir. Obično izaziva lokalne smetnje. Eksciziorna biopsija smatra se tretmanom izbora za piogeni granulom, nakon čega sledi uklanjanje lokalnih iritansa, kako bi se izbeglo ponavljanje oboljenja. U ovom članku, prikazan je slučaj oralnog piogenog granuloma na gingivi, koji se proteže do nepca, kod pacijenta starosti 54 godine, uz istovremeni prikaz pregleda literature.

**Metode:** Posle uzimanja detaljne anamneze i kliničkog pregleda, postavljena je radna dijagnoza piogenog grandoma. Urađena je eksciziorna biopsija i lezija je poslata na patohistološki pregled.

**Rezultat:** Patohistološkim pregledom lezije potvrđena je klinička dijagnoza piogenog granuloma.

**Zaključak:** Piogeni granulom nije neoplastične prirode i stoga je potrebno detaljno poznavanje ove lezije, kako bi se identifikovala u ranoj fazi i na odgovarajući način lečila, pre nego što izazove bilo kakvu smetnju u normalnim rutinskim funkcijama.

**Ključne reči:** piogenost, hiperplazija, granulom, reaktivnost

### **Corresponding author:**

Sonika Achalli  
Nitte Deemed to be University  
AB Shetty Memorial Institute of Dental Sciences  
Department of Oral Medicine and Radiology  
Mangalore-575018 India.  
Email: sonikachalli@gmail.com

### *Abstract*

**Uvod:** Pyogenic granuloma is a common non neoplastic growth in the oral cavity which is hyperplastic in nature. Various theories of etiopathogenesis have been suggested for pyogenic granuloma. It is commonly thought to be a response to various local irritants like calculus, foreign body material etc. It is hemorrhagic and often bleeds on touch. It usually causes local interference. Excisional biopsy is considered the treatment of choice for pyogenic granuloma followed by removal of the local irritants in order to avoid recurrence. This article presents a case of oral pyogenic granuloma in a 54-year-old patient in the gingiva extending up to the palate with a review of literature.

**Materials and methods:** A thorough case history and clinical examination was done. A provisional diagnosis of pyogenic granuloma was given. Excisional biopsy was performed and the lesion was sent for histopathological evaluation.

**Result:** Histopathological examination of the lesion confirmed the clinical diagnosis of pyogenic granuloma.

**Conclusion:** Pyogenic granuloma is non neoplastic in nature and hence a detailed knowledge of this lesion is required in order to identify it in its early stage and to manage it appropriately before it causes any hindrance in normal routine functions.

**Key words:** pyogenic, hyperplasia, granuloma, reactive

2022 Faculty of Medicine in Niš. Clinic of Dental Medicine Niš.  
All rights reserved / © 2022. Medicinski fakultet Niš. Klinika za  
dentalnu medicinu Niš. Sva prava zadržana.

## Uvod

Piogeni granulom (PG) smatra se učestalim tumorom u usnoj duplji. Nije neoplastične prirode<sup>1</sup>. PG predstavlja jedan od različitih tipova inflamatornih hiperplazija u koje spadaju i fibrom, polip pulpe, *epulis fissuratum*, granulom džinovskih ćelija, papilarna hiperplazija i *epulis graviditatis*<sup>2</sup>. Hullihen<sup>3</sup> je 1844. godine opisao prvi slučaj PG. Termin koji se danas koristi „piogeni granulom“ ili *granuloma piogenicum* predložio je Hartzell<sup>4</sup> 1904. godine, te je stoga nazvan i „Crockerova i Hartzellova bolest“. Histološki, PG pokazuje brojne krvne sudove i upalu, pa je opisan kao „hemangiozni granulom“ od strane Angelopoulou<sup>5</sup> i *granuloma telangiectaticum* od strane Cawsona i sar.<sup>6</sup>. Cawson i sar. dalje su opisali 2 oblika PG; lobularni kapilarni hemangiom i nelobularni kapilarni hemangiom<sup>6</sup>.

Smatra se da se PG pojavljuje kao tkivo koje nastaje kao odgovor na lokalnu iritaciju i traumu<sup>1</sup>. Bilo koji stimulans ili bilo koja povreda prisutna u gingivalnom vratu, lokalni iritansi kao što su kamenac, strano telo i loša oralna higijena mogu postati uzročni faktor za pojavu PG i dalja iritacija tkiva rezultiraće bujnom proliferacijom granulacionog tkiva. Drugi predisponirajući faktori uključuju hormone, određene lekove, viruse i bakterije<sup>1,7</sup>.

PG je češći kod žena i obično je zastupljeniji u drugoj deceniji života. Oralni PG ima veću sklonost ka gingivi, što mu je i najčešća lokalizacija u usnoj duplji<sup>1</sup>.

U ovom članku predstavljamo slučaj piogenog granuloma gingive sa palatinalnim proširenjem kod pacijentkinje stare 54 godine.

## Prikaz slučaja

Pacijentkinja stara 54 godine javila se našoj stomatološkoj ordinaciji žaleći se na pojavu izrasline u blizini prednjih, gornjih desnih zuba, koja je bila prisutna od 3 do 4 meseca do trenutka javljanja lekaru. Pacijentkinja je navela da je rast izrasline u početku bio mali, a zatim se postepeno povećavao do veličine koja je zabeležna na prijemu. Izraslina je bila povezana sa tupim povremenim bolom, praćen nelagodnošću i krvarenjem pri dodiru i četkanju. Pacijentkinja ne navodi u anamnezi bilo kakvo drugo vlaženje sa površine lezije. Nije bilo relevantne medicinske istorije bolesti. Pacijentkinja je bila kod stomatologa radi vađenja zuba pre oko 2 do 3 godine i period nakon vađenja protekao je bez ikakvih problema. Nije otkrivena ozbiljna asimetrija lica.

## Introduction

Pyogenic granuloma (PG) is considered to be a common tumor like growth in the oral cavity. This is non-neoplastic in nature<sup>1</sup>. PG is one of the various types of inflammatory hyperplasias which also include fibroma, pulp polyp, *epulis fissuratum*, giant cell granuloma, palatal papillary hyperplasia and pregnancy *epulis*<sup>2</sup>. Hullihen<sup>3</sup> in 1844 described the first case of PG. The current term pyogenic granuloma or granuloma pyogenicum was coined by Hartzell<sup>4</sup> in 1904 and hence was also called 'Crocker and Hartzell's disease'. Histologically, PG shows numerous blood vessels and inflammation, hence was described as 'hemangiomatic granuloma' by Angelopoulos<sup>5</sup> and 'granuloma telangiectaticum' by Cawson et al.<sup>6</sup>. Cawson et al. further have described 2 forms of PG; lobular capillary haemangioma and non-lobular capillary haemangioma<sup>6</sup>.

PG is thought to appear as an exuberant tissue of response to local irritation and trauma<sup>1</sup>. Any stimulant or injury present in the gingival crevice; local irritants like calculus, foreign body and poor oral hygiene; may become a causative factor for PG to occur and further irritation to the tissues will result in an exuberant proliferative granulation tissue. Other predisposing factors include hormones, certain drugs, viruses and bacteria<sup>1,7</sup>.

PG is more prevalent in females and usually in the second decade of life. Oral PG has a higher predilection for gingiva thus being the most common site in the oral cavity<sup>1</sup>.

Here in this article, we present a case of pyogenic granuloma of the gingiva with palatal extension in a 54-year-old female patient.

## Case Report

A 54-year-old female patient reported to our dental clinic with a chief complaint of a growth near upper right front teeth present for 3 to 4 months. The patient reported that the growth was initially small and then gradually increased to the present size. It was associated with dull intermittent type of pain with discomfort and bleeding on touching and brushing. There was no history of any other discharge from the surface of the lesion. There was no relevant medical history. The patient had visited the dentist for the extraction of the teeth around 2 to 3 years back and the post-extraction period was uneventful. No gross facial asymmetry was detected.

Pri intraoralnom pregledu uočena je izraslina ružičasto-crvene boje, veličine približno 2 do 3 centimetra, koja polazi od labijalne brazde između zuba 12 i zuba 13, obuhvatajući površinu alveolarnog grebena i proteže se do palatinalnog regiona. Površina lezije je pigmentirana i glatka, osim jednog mesta u centru, koje je bilo ulcerisano. Došlo je do patološke migracije zuba 13 zbog lezije (Slika 1 i Slika 2).



**Slika 1:** Gingivalna izraslina koja se, posmatrano iz labijalnog pravca, nalazi između zuba 12 i 13 (Izvor fotografije: Muralijeva kolekcija)

**Figure 1:** Gingival growth from labial aspect between 12 and 13 (Photo courtesy: Murali's Collection)

Pri palpaciji, lezija je bila meke konzistencije, osetljiva i krvarila je na dodir. Nedostajali su zubi 15, 16, 17, 25 i 36. Do 26 bili su prisutni zaostali korenovi. Bili su prisutni prebojenost i kamenac.

Na osnovu anamneze i kliničkog pregleda postavljena je privremena dijagnoza piogenog granuloma sa diferencijalnom dijagnozom perifernog gigantcelularnog granuloma, perifernog okoštajućeg fibroma i traumatskog iritacionog fibroma.

Nakon dobijanja pristanka pacijenta, urađena je ekscizionna biopsija cele izrasline i poslata je na patohistološki pregled.

Patohistološka analiza pokazala je ulcerisanu površinu sa fibrinoznom eksudatom i vezivnim tkivom koje se ispod nalazilo, a koje se sastoji od obilja velikih vaskularnih prostora obloženih endotelnim ćelijama i brojnim kapilarama, koji bujaju. Gusta infiltracija mešovitih inflamatornih ćelija, ekstravaziranih eritrocita, materije i kolonija mikroba, takođe je primećena u tkivu. Ovakav nalaz bio je kompatibilan sa kliničkom dijagnozom piogenog granuloma (Slika 3).

On intraoral examination; the growth was pinkish red in colour, pedunculated, of approximately 2 x 3 centimeters in size, extending from the labial sulcus between 12 and 13 involving the surface of the alveolar ridge and extending up to the palatal region. The surface of the lesion was pigmented and smooth except for one place at the centre which was ulcerated. There was pathological migration of 13 due to the lesion (Figure 1 and Figure 2).



**Slika 2:** Gingivalna izraslina koja se proteže do palatinalnog regiona zuba 12 i 13 (Izvor fotografije: Muralijeva kolekcija)

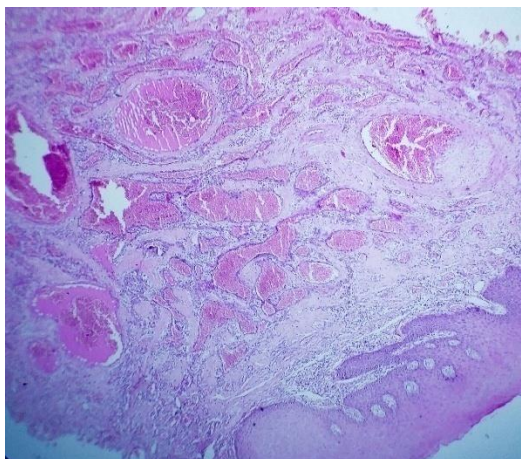
**Figure 2:** Gingival growth extending to palatal region between 12 and 13 (Photo courtesy: Murali's Collection)

On palpation, the lesion was soft in consistency, tender and bled on touch. There were missing teeth wrt 15, 16, 17, 25 and 36. Root stumps were present wrt 26. Stains and calculus was present.

Based on the history and clinical examination provisional diagnosis of pyogenic granuloma was made with differential diagnosis of peripheral giant cell granuloma, peripheral ossifying fibroma and traumatic (irritation) fibroma.

The patient's consent was taken and excisional biopsy of the entire growth was performed and sent for histopathological evaluation.

Histopathological evaluation showed ulcerated surface with fibrinous exudate and underlying connective tissue comprising of abundant large vascular spaces lined by endothelial cells and numerous budding capillaries. Dense infiltration of mixed inflammatory cells, extravasated RBCs, vegetable matter and microbial colonies were also seen in the tissue. This was compatible with the clinical diagnosis of pyogenic granuloma (Figure 3).



**Slika 3:** Histopatološke karakteristike (piogenog granuloma: Biopsija br. 277/18, ABSMIDS)  
**Figure 3:** Histopathological features (of pyogenic granuloma: Biopsy no. 277/18, ABSMIDS)

### **Diskusija**

Smatra se da je piogeni granulom vrsta inflamatorne hiperplazije, preuveličana reakcija na lokalne iritirajuće faktore i traumu. Različiti predisponirajući faktori mogu usloviti ovu pojavu kamenac, strani materijal, lošu oralnu higijenu, pa čak i nadoknade preteranih kontura<sup>1,7,8</sup>.

### **Etiopatogeneza**

PG se može javiti u svim starosnim grupama, ali češće se javlja kod mladih odraslih osoba, posebno kod žena. Ovo bi moglo biti zbog visokog nivoa cirkulišućih hormona, kao što su progesteron i estrogen<sup>8</sup>. Raniji izveštaji podržali su teoriju o prisustvu uvećanja gingive u trudnoći. Takođe, objavljeno je to da su morfogenetski faktori veći kod PG u poređenju sa normalnom gingivom, čime se podržava ideja o angiogenezi u trudnoći<sup>9,10</sup>. PG se stoga ponekad naziva tumor trudnoće ili granuloma gravidarum, kada se javlja kod trudnica<sup>11</sup>.

U literaturi se mogu naći izveštaji u kojima je PG smatran zaraznim entitetom. U studiji sprovedenoj od strane Kerra i drugih<sup>12</sup> određena strana tela, stafilokoki i botriomikoza, kao i lokalizovana infekcija na zidu krvnog suda prijavljeni su kao faktori koji doprinose nastanku PG. Prisustvo gram pozitivnih i gram negativnih bacila u PG opisali su Bhaskar i sar<sup>13</sup>. Shafer i saradnici takođe su prijavili to da PG nastaje usled infekcije od stafilokoka i streptokoka<sup>14</sup>. Međutim, dominantan rast kapilara primećuje se unutar granulomatozne mase PG, a ne stvarnih piogenih organizama i gnoja, tako da je termin piogeni granulom prijavljen kao pogrešan naziv<sup>1</sup>.

### **Discussion**

Pyogenic granuloma is said to be a type of inflammatory hyperplasia an exaggerated reaction to local irritating factors and trauma. The various predisposing factors may include calculi, foreign material, poor oral hygiene and even over-contoured restorations<sup>1,7,8</sup>.

### **Etiopathogenesis**

PG can occur in all age groups but it is more frequently seen in young adults especially in females. This could be due to the high levels of circulating hormones like progesterone and estrogen<sup>8</sup>. Earlier reports have supported the theory of the presence of gingival enlargements in pregnancy. It's been also reported that morphogenetic factors are higher in PG when compared to normal gingiva thus supporting the idea of angiogenesis in pregnancy<sup>9,10</sup>. PG is therefore sometimes referred as pregnancy tumor or granuloma gravidarum when it occurs in pregnant females<sup>11</sup>.

There have been reports in the literature which have regarded PG as an infection entity. Certain foreign bodies, staphylococci and botryomycosis, and localized infection on the wall of the blood vessel have been reported as contributing factors for PG by Kerr et al.<sup>12</sup>. The presence of gram positive and negative bacilli in PG has been described by Bhaskar et al.<sup>13</sup>. Shafer et al. have also reported PG arising due to infection from staphylococci and streptococci<sup>14</sup>. However, predominant growth of capillaries is seen within the granulomatous mass of PG rather than actual pyogenic organisms and pus, so the term pyogenic granuloma has been reported as a misnomer<sup>1</sup>.

Neki autori prijavili su PG kao „reaktivni“ ili „reparativni“ tumorski proces.

Regezi i saradnici predložili su da se okarakteriše kao bujna proliferacija vezivnog tkiva, izazvana poznatim stimulusom ili povredom, poput kamenca ili stranog materijala unutar gingivalne pukotine<sup>7</sup>. Brojni drugi etiološki faktori predloženi su, kao mogući razlozi nastanka PG, kao što su hronična iritacija, lekovi, hormoni, traume, povreda mlečnog zuba, loše restauracije, impaktacija hrane, trauma četkicom za zube itd<sup>8</sup>. Ainamo<sup>15</sup> je takođe sugerisao na to da će ponavljana trauma tokom pranja zuba ili bilo koje druge funkcije koja izaziva oslobađanje različitih endogenih i angiogenih faktora doprineti povećanju vaskularnosti ove lezije.

U ovom konkretnom slučaju, pacijentkinja je bila zdrava žena od 54 godine. Verovatni etiološki faktori u ovom slučaju mogli bi da budu prisustvo velikih količina kamenca, usled loše održavane oralne higijene, ponovljene traume zuba antagonista zbog njihovog položaja i okluzalnih smetnji pri žvakanju hrane zbog njene veličine. Ovo je u skladu sa etiološkim faktorima koji su prethodno pomenuti<sup>7,8,15</sup>.

### *Kliničke karakteristike*

Piogeni granulom u usnoj duplji može se javiti u svim životnim dobima, a najčešće se javlja u drugoj i petoj deceniji života. Žene češće oboljevaju od muškaraca<sup>13</sup>. Gingiva je dominantno mesto gde se PG javlja u usnoj duplji, češće na marginalnom, nego pripojnom delu<sup>13,16</sup>. Primećuje se i na usnama, jeziku, bukalnoj sluzokoži, nepcu i mukobukalnom naboru; češće u maksili nego u mandibuli<sup>13</sup>. Veličina PG obično varira između nekoliko milimetara i nekoliko centimetara<sup>7,11</sup>.

Intraoralno, PG se pojavljuje kao izdignuta/povišena lezija, koja može biti glatka ili egzofitna na potpornoj ili pedukuliranoj osnovi. Površina je obično prekrivena crvenim hemoragičnim i eritematoznim papulama, koje daju lobularni i bradavičasti izgled, sa ulceracijama<sup>7,11</sup>. Boja lezije varira od ružičaste, preko crvene do crvenkastoljubičaste u zavisnosti od starosti i vaskularnosti<sup>1,17</sup>. U prikazanom slučaju, takođe je predstavljena ružičastocrvena izraslina sa pedukuliranom bazom približne veličine 2 cm x 3 cm, koja se proteže od labijalne brazde do palatinalne regije između zuba 12 i 13, koja je imala glatku površinu, osim ulceracije u centru izrasline. Krvarila je na dodir.

PG has been reported as 'reactive' or 'reparative' tumor process by some authors. It has been suggested as an exuberant proliferation of the connective tissue to a known stimulus or injury like calculus or foreign material within the gingival crevice by Regezi et al.<sup>7</sup>. Numerous other etiologic factors have been suggested like chronic irritation, drugs, hormones, trauma, injury to a primary tooth, defective restorations, food impaction, toothbrush trauma etc.<sup>8</sup>. Ainamo<sup>15</sup> has also suggested that recurrent trauma while toothbrushing or any other function causing the release of various endogenous and angiogenic factors will contribute to the increase in vascularity of this lesion.

In the present case, patient was a 54-year-old healthy female. The probable etiologic factor in this case could be due to the presence of large amounts of calculus because of poorly maintained oral hygiene, repeated trauma from the opposing teeth due to its position and occlusal interference while chewing food due to its size. This is in accordance with the etiologic factors mentioned previously<sup>7,8,15</sup>.

### *Clinical features*

Pyogenic granuloma in the oral cavity occurs in a wide range of age, more commonly being in the second and the fifth decade of life. Females are more often affected than males<sup>13</sup>. Gingiva is the predominant site where PG is seen in the oral cavity, especially the marginal gingiva than the alveolar part<sup>13,16</sup>. It is also noticed in the lips, tongue, buccal mucosa, palate and mucobuccal fold; frequenting more often in the maxilla than in the mandible<sup>13</sup>. PG usually varies between few millimeters to several centimeters in size<sup>7,11</sup>.

Intraorally, PG appears as a raised/elevated lesion which is smooth or exophytic on a sessile or pedunculated base. The surface is usually covered with red hemorrhagic and erythematous papules, which gives a lobulated and warty appearance with ulcerations<sup>7,11</sup>. The colour of the lesion varies from pink to red to reddish purple depending upon the age and vascularity<sup>1,17</sup>.

The case presented here also showed a pinkish red growth with pedunculated base of approximately size 2 x 3 cm extending from the labial sulcus up to the palatal region in between 12 and 13 which had smooth surface except for an ulceration at the centre of the growth. It bled on touch.

### *Patohistološke karakteristike*

Sloj parakeratinizovanog ili nekera-  
tinizovanog slojevitog skvamoznog epitela  
prekriva piogeni granulom. Identi-  
fikovana su dva histološka tipa PG. Proliferacija krvnih  
sudova koji su organizovani kao lobularni  
agregati, vidi se kod prvog tipa i naziva se  
lobularni kapilarni hemangiomi (LCH). Kod  
drugog tipa primećena je visoko vaskularna  
proliferacija koja podseća na granulaciono  
tkivo i to se naziva ne-LCH tipom<sup>11,13,18,19</sup>.  
Može se videti ulceracija na određenim  
mestima na površini PG I u takvim  
slučajevima edem je izražen<sup>13</sup>.

Slične patohistološke karakteristike  
uočene su i u ovom slučaju.

### *Diferencijalna dijagnoza*

U diferencijalnoj dijagnozi piogenog  
granuloma treba razmotriti periferni  
osificirajući fibrom, periferni granulom  
gigantskih ćelija, hemangiomi, periferni  
odontogeni fibrom, hiperplastične upale  
gingive, konvencionalno granulaciono tkivo,  
kao i Kaposijev sarkoma i Non-Hodgkinov  
sarkom<sup>14,20</sup>.

Periferni karcinom gigantskih ćelija  
može se histološki isključiti zbog prisustva  
multinuklearnih džinovskih ćelija<sup>7</sup>. Takođe  
isključuje se prisustvo infektivnog izvora<sup>21</sup>.  
Periferni osificirajući fibrom i periferni  
odontogeni fibrom takođe se javljaju pretežno  
u gingivi, ali mogu se eliminisati zbog  
minimalne vaskularne komponente u  
poređenju sa PG<sup>7,22</sup>. Hemangiomi se histološki  
razlikuje prisustvom proliferacije endotelnih  
ćelija, ali bez akutnog inflamatornog ćelijskog  
infiltrata koji se vrlo često vidi kod PG<sup>23</sup>.  
Kaposijev sarkom obično se povezuje sa  
sindromom stečene imunodeficijencije i  
pokazuje displastičnu proliferaciju, ćelije  
vretenaste, vaskularne pukotine, ekstravazirane  
eritrocite i intracelularna hijalinska tela. Ove  
karakteristike ne vide se kod PG<sup>19</sup>. Histološki  
hiperplastična upala gingive izgleda veoma  
slično PG i stoga se za postavljanje dijagnoze  
treba osloniti na istoriju bolesti i klinički  
opis<sup>19</sup>.

### *Terapija*

Ekscizionna biopsija smatra se zlatnim  
standardom u lečenju piogenih granuloma. U  
slučaju da ekscizija izazove bilo kakav  
izražen deformitet, onda se može planirati  
incizionna biopsija<sup>22</sup>. Ekscizija lezije praćena  
uklanjanjem lokalnih predisponirajućih  
faktora kao što su kamenac, strani materijal i  
bilo koji drugi lokalni iritansi, obično se  
preporučuje kao opcija lečenja<sup>11</sup>.

### *Histopathological features*

A layer of parakeratinized or non-  
keratinized stratified squamous epithelium  
covers pyogenic granuloma. Two histological  
types of PG have been identified. Proliferation  
of blood vessels which are organized as lobular  
aggregates is seen in the first type and is called  
lobular capillary haemangioma (LCH). In the  
second type, highly vascular proliferation  
resembling granulation tissue has been  
observed and this is called non-LCH  
type<sup>11,13,18,19</sup>. Ulceration at certain places on the  
surface of PG may be seen and in such cases  
edema is prominent<sup>13</sup>.

Similar histopathological features were  
seen in the present case as well.

### *Differential diagnosis*

The differential diagnosis for pyogenic  
granuloma consists of peripheral ossifying  
fibroma, peripheral giant cell granuloma,  
haemangioma, peripheral odontogenic  
fibroma, hyperplastic gingival inflammation,  
conventional granulation tissue, Kaposi's  
sarcoma and Non-Hodgkin's Lymphoma<sup>14,20</sup>.

Peripheral giant cell carcinoma can be  
ruled out histologically due to the presence of  
multinucleated giant cells<sup>7</sup>. There is also  
absence of an infectious source<sup>21</sup>. Peripheral  
ossifying fibroma and peripheral odontogenic  
fibroma also occur predominantly in the  
gingiva but can be eliminated because of the  
minimal vascular component when compared  
to PG<sup>7,22</sup>. A haemangioma is distinguished  
histologically by the presence of endothelial  
cell proliferation but without acute  
inflammatory cell infiltrate which is very often  
seen in PG<sup>23</sup>. Kaposi's sarcoma is commonly  
associated with Acquired Immunodeficiency  
Syndrome and shows proliferation of  
dysplastic spindle cells, vascular clefts,  
extravasated erythrocytes and intracellular  
hyaline bodies. These features are not seen in  
PG<sup>19</sup>. Hyperplastic gingival inflammation  
appears very similar to PG histologically and  
hence history and clinical description is relied  
on<sup>19</sup>.

### *Treatment*

Excisional biopsy is considered as the  
gold standard in the treatment of pyogenic  
granuloma. If in case the excision will cause  
any marked deformity then incisional biopsy  
can be planned<sup>22</sup>. Excision of the lesion  
followed by removal of local predisposing  
factors like calculus, foreign material and  
any other local irritant is usually  
recommended as the treatment option<sup>11</sup>.

U ovom slučaju, eksciziona biopsija urađena je da bi se uklonila cela izraslina i ona je poslata na patohistološki pregled. Nakon ekscizije, izvršeno je skaliranje korena kako bi se uklonili svi lokalni faktori poput kamenca i stranog tela koji su mogli biti uzrok.

Različite, druge modalitete lečenja PG isprobali su različiti kliničari, a što uključuje kriohirurgiju, Nd IAG laser, pulsni laser za bojenje sa fleš lampom, laser sa ugljen-dioksidom, elektrodessikacija, skleroterapija i natrijum-tetradecil-sulfat<sup>8</sup>.

Stopu recidiva od 16% prijavili su Taira i saradnici u svojoj studiji. Nepravilna/-nepotpuna ekscizija lezije, ponovljena trauma i neuspeh u uklanjanju lokalnih iritansa, poput kamenca, mogu dovesti do ponovnog pojavljivanja lezije<sup>7,22</sup>.

### **Zaključak**

Piogeni granulom je učestala neneoplastična lezija u usnoj duplji. Obično nastaje kao odgovor na lokalne stimulse/iritanse. Predisponirajući faktori su brojni i stoga je temeljno poznavanje lezije veoma važno, kako bi se razlikovao od drugih stanja, kao i za pravilno lečenje.

**Konflikt interesa: Nema**

**Finansijske podrške: Nema**

**Zahvalnica:**

Autori se zahvaljuju Departmanu za Oralnu patologiju koji je obezbedio patohistološki izveštaj uzorka.

In the present case, excisional biopsy was done to remove the entire growth and sent for histopathological evaluation. Post excision, scaling with root planning was performed in order to remove any local factors like calculus and foreign body material which could have been the cause.

Various other treatment modalities for PG have been tried by different clinicians like cryosurgery, Nd YAG laser, flash lamp pulse dye laser, carbon dioxide laser, electrodesiccation, sclerotherapy and sodium tetradecyl sulfate<sup>8</sup>.

Recurrence rate of 16% has been reported by Taira et al. Improper/incomplete excision of the lesion, repeated trauma and failure to remove the local irritants like calculus may result in recurrence of the lesion<sup>7,22</sup>.

### **Conclusion**

Pyogenic granuloma is a common non neoplastic lesion seen in the oral cavity. It usually arises as a response to local stimuli/irritant. The predisposing factors are numerous and hence a thorough knowledge regarding the lesion is very important to differentiate it from other conditions and also for its proper management.

**Conflict of Interest: Nil**

**Financial Support: Nil**

**Acknowledgments:**

The authors acknowledge the contribution rendered by the Dept. of Oral Pathology for providing the histopathological report of the specimen.

## LITERATURA /REFERENCES

1. Neville BW, Damm DD, Allen CM, Chi A. Soft tissue tumours. *Oral and Maxillofacial Pathology*. 4th ed. Amsterdam, Netherlands: Elsevier Inc 2016;p 483-495.
2. Greenberg MS, Glick M. *Burket's Oral Medicine: diagnosis and treatment*. 10th ed. BC Decker, Hamilton; 2003;p 141-142.
3. Hullihen SP. Case of aneurism by anastomosis of the superior maxillae. *Am J Dent Sci* 1844;4:160-162.
4. Hartzell MB. Granuloma pyogenicum. *J Cutan Dis Syph* 1904;22:520-525.
5. Angelopoulos AP. Pyogenic granuloma of the oral cavity: Statistical analysis of its clinical features. *J Oral Surg* 1971;29:840-847.
6. Cawson RA, Binnie WH, Speight PM, Barrett AW, Wright JM. *Lucas Pathology of Tumors of Oral Tissues*. 5th ed. Missouri: Mosby 1998;p 252-254.
7. Regezi JA, Sciubba JJ, Jordan RC. *Oral Pathology: Clinical Pathologic Considerations*. 4th ed. Philadelphia: WB Saunders 2003;p 115-116.
8. Jafarzadeh H, Sanatkhan M, Mohtasham N. Oral pyogenic granuloma: a review. *J Oral Sci* 2006;48(4):167-175.
9. Hosseini FH, Targari F, Shaigan S. Immunohistochemical analysis of estrogen and progesterone receptor expression in gingival lesions. *Iran J Public Health* 2006;35:38-41.
10. Yuan K, Jin YT, Lin MT. Expression of Tie-2, angiopoietin-1, angiopoietin-2, ephrinB2 and EphB4 in pyogenic granuloma of human gingiva implicates their roles in inflammatory angiogenesis. *J Periodontal Res* 2000;35:165-171.
11. Neville BW, Damm DD, Allen CM, Bouquot JE. *Oral and Maxillofacial Pathology*. 2nd ed. Philadelphia: Saunders 2002;p 447-449.
12. Kerr DA. Granuloma Pyogenicum. *Oral Surg* 1951;4:158.
13. Bhaskar SN, Jacoway JR. Pyogenic granuloma – clinical features, incidence, histology, and result of treatment: Report of 242 cases. *J Oral Surg* 1966;24:391-8.
14. Shafer, Hine, Levy. *Shafer's Textbook of Oral pathology*. 5th ed. Amsterdam: Elsevier Health Sciences 2006;p 459-461.
15. Ainamo J. The effect of habitual toothcleansing on the occurrence of periodontal disease and dental caries. *Suom Hammaslaak Toim* 1971;67:63-70.
16. Vilmann A, Vilmann P, Vilmann H. Pyogenic granuloma: Evaluation of oral conditions. *Br J Oral Maxillofac Surg* 1986;24:376-382.
17. Mubeen K, Vijaylakshmi KR, Abhishek RP. Oral pyogenic granuloma with mandible involvement: An unusual presentation. *J Dent Oral Hyg* 2011;3:6-9.
18. Mille SE, Cooper PH, Feschner RE. Lobular capillary hemangioma: the underlying lesion of pyogenic granuloma. A study of 73 cases from the oral and nasal mucous membranes. *Am J Surg Pathol* 1980;4:470-479.
19. Bouquot JE, Nikai H. Lesions of the oral cavity. In *diagnostic surgical pathology of the head and neck*. Gnepp Dr ed, WB Saunders, Philadelphia 2001;p 141-233.
20. Rees TD, Ambalavanan N. Pathology and management of periodontal problems in patients with human immunodeficiency virus infection. In: Newman MG, Takei HH, Klokkevold PR, editors. *Carranza's Clinical Periodontology*. 10th ed. Philadelphia, PA: Saunders 2006; p 380-381, 521-524.
21. Kamal R, Dahiya P, Puri A. Oral pyogenic granuloma: Various concepts of etiopathogenesis. *J Oral Maxillofac Pathol* 2012;16:79-82.
22. Taira JW, Hill TL, Everett MA. Lobular capillary hemangioma (pyogenic granuloma) with satellitosis. *J Am Acad Dermatol* 1992;27:297-300.
23. Calonje E, Wilson-Jones E. Vascular tumors: Tumors and tumor like conditions of blood vessels and lymphatics. In: Elder D, Elenitsas R, Jaworsky C, Johnson B Jr, editors. *Lever's Histopathology of the Skin*. 8th ed. Philadelphia:Lippicott-Raven 1997;p. 895.